

CHARMILL

RESIDENTIAL



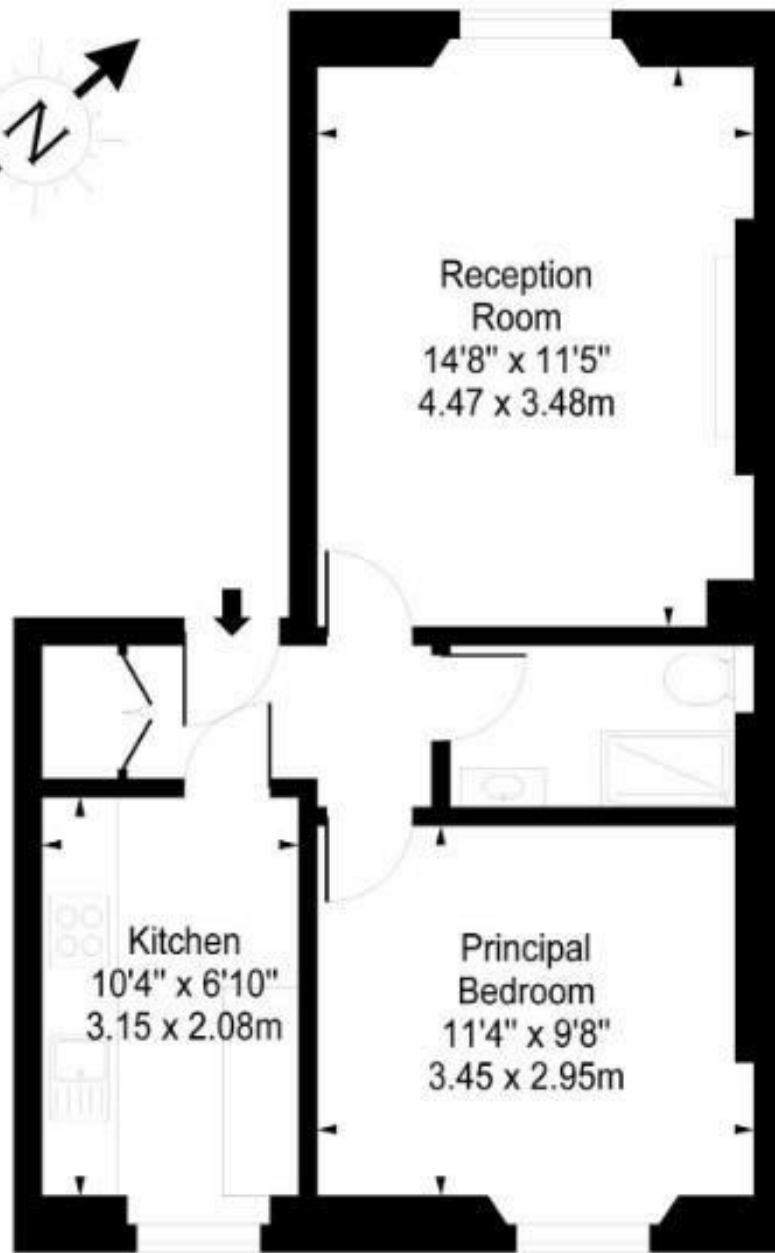
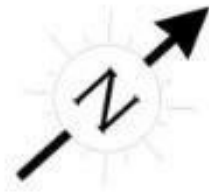
Formosa Street, Little Venice, W9

A charming unfurnished one double bedroom apartment arranged on the first floor of a period conversion in Little Venice. The apartment comprises a spacious reception/dining room with wooden flooring, separate fully fitted kitchen, double bedroom with ample storage, shower room and access to a well-maintained communal garden.

- One bedroom
- First floor
- Communal Garden
- Period Conversion
- Wooden flooring

£577

Formosa Street, W9



First Floor

Energy Efficiency Rating		Current	Potential
Very energy efficient - lower running costs			
(92 plus) A			
(81-91) B			
(69-80) C			
(55-68) D			
(39-54) E			
(21-38) F			
(1-20) G			
Not energy efficient - higher running costs			
		73	80
England & Wales		EU Directive 2002/91/EC	

Environmental Impact (CO ₂) Rating		Current	Potential
Very environmentally friendly - lower CO ₂ emissions			
(92 plus) A			
(81-91) B			
(69-80) C			
(55-68) D			
(39-54) E			
(21-38) F			
(1-20) G			
Not environmentally friendly - higher CO ₂ emissions			
		75	85
England & Wales		EU Directive 2002/91/EC	

